



# SCHOLARLY CONCENTRATIONS PROGRAM ANNUAL REPORT 2021

INDIANA UNIVERSITY SCHOOL OF MEDICINE



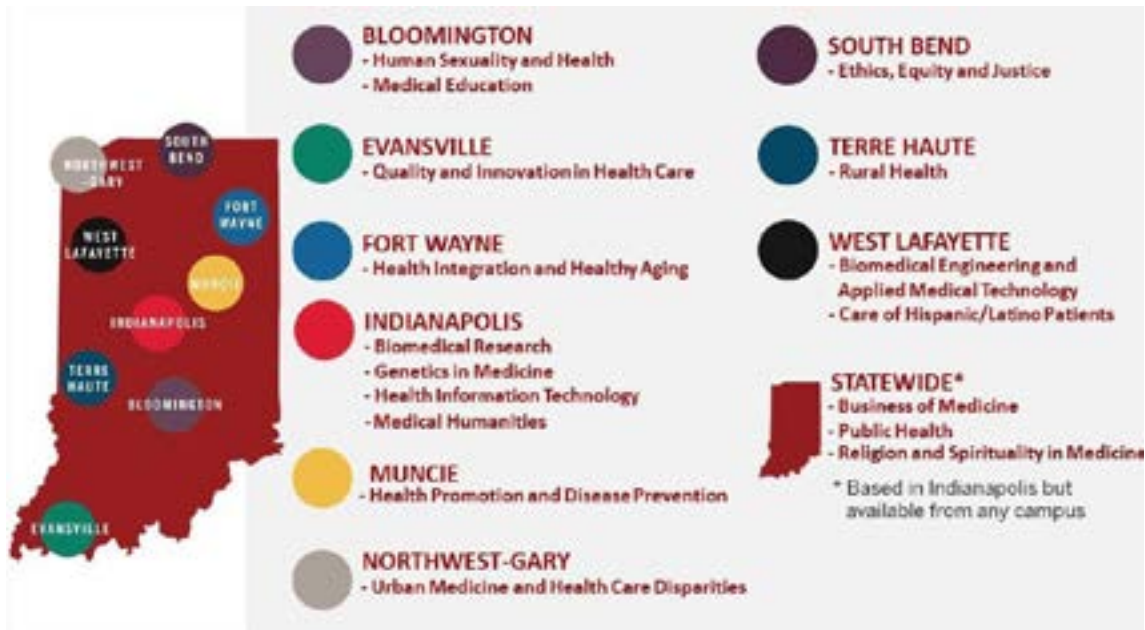


TABLE OF  
CONTENTS

**Welcome** ..... 4

**Scholarly Concentrations Program Overview** ..... 5

**Graduate Spotlights** ..... 8

**The Scholarly Concentrations** ..... 22

**Program Scholarship** ..... 40

**Leadership** ..... 41





# Welcome

Greetings,

The year 2021 was an incredible year for IU School of Medicine's Scholarly Concentrations Program. Like all of our education programs impacted by the COVID-19 pandemic, our students, faculty, staff and community partners didn't miss a step and persevered through the most challenging of times. Most of the program continued to be delivered virtually as it was in 2020, with some lab and community opportunities able to be in person with COVID safety protocols of masks and social distance. Only two years old, such challenges could spell trouble for many young initiatives. I am extremely proud of and grateful for the program leadership, faculty, staff, and students - everyone involved in the program. In May 2021, our first six Scholarly Concentrations participants graduated and we celebrate their success and willingness to blaze a trail for those who come next. As I write this letter, approximately 80 students in the Class of 2022 have or are poised to complete their scholarly concentrations and graduate in May 2022. Before then, most will have submitted manuscripts for publication and presented posters at IU School of Medicine's Education Day.

The Scholarly Concentrations Program offers students a longitudinal extracurricular program, designed to enhance their medical school experience through a parallel curriculum delivered through their four years of study without incurring additional time or tuition. Students complete topic-specific coursework,



**Paul M. Wallach, MD**  
Executive Associate Dean,  
Educational Affairs and  
Chief Academic Officer

engage in scholarly pursuits and benefit from mentorship to become better prepared leaders in their chosen field of interest and develop professional identity beyond medical knowledge. Concentrations are topics of broad interest that appeal to students to augment the medical curriculum and enhance their education. I believe they can be game changers when students are applying for residencies. The program leverages the unique expertise, strengths, interests and needs of our diverse campuses and communities, and shines a spotlight on them. This is particularly important for our regional campuses, where the program serves as a tool to help attract and retain students. IU School of Medicine is unique in this strategic use of scholarly concentrations.

Today, we have about 300 students participating in one of 17 concentrations statewide, about half at regional campuses. During 2021, we accelerated implementation of

our assessment and evaluation plan. Program leaders listened to feedback and adjusted while continuing to build systems, processes and practices to ensure the sustainability of this large and rapidly growing program. I am thrilled that the Scholarly Concentrations is also benefiting from resources and partnerships available from the federal Health Resources and Services Administration grant IU School of Medicine received to help educate medical students to better care for underserved populations. You can read more about this in the Overview. Additionally, our work with the national Scholarly Concentrations Collaborative includes a survey of residency program directors on the importance of research and scholarly endeavors like this program in light of United States Medical Licensing Examination (USMLE) Step 1 now being Pass/Fail.

I truly appreciate everyone working diligently to create an enriching program for our students, and I applaud the students participating. Our School and communities are better for it. I invite you to spend a few minutes reading about our students' accomplishments, the growth of the program and what is happening in the different concentrations in this annual report. You will be glad you did.

Paul M. Wallach, MD  
Executive Associate Dean,  
Educational Affairs and Chief

# Scholarly Concentrations Overview

During 2021, the program's second year, significant progress was made toward creating a strong and sustainable Scholarly Concentrations Program. Today, there are 17 concentrations with Biomedical Research, Medical Education and Religion and Spirituality in Medicine starting in 2021. All draw upon faculty expertise and community characteristics of their respective campuses. Fourteen are offered at one of the School's nine campuses and three are available to students throughout the state. The program was launched in Summer 2019 with 11 concentrations, at least one on every campus. Medical students have extensive options to participate in this extracurricular program that is designed to enhance their educational experience through a parallel curriculum delivered during their four years of study, ideally at one campus.

Unlike traditional academic certificates and degrees, Scholarly Concentrations do not add time or costs to completing an MD degree. The work required to complete concentrations is manageable, using the summer between the first and second years, elective and other less intense times in the curriculum.

Concentrations are a fantastic way for MD students to customize their education, receive unique mentorship opportunities, and engage in experiences that lead to multidisciplinary scholarship and community engagement. Students complete topic-specific courses, a scholarly project and a scholarly product. For the product, most will produce a manuscript

to be submitted for publication. They will also present posters at IU School of Medicine Education Day. Students can promote their Scholarly Concentration work to help them stand out in residency applications and interviews. Students who successfully complete the requirements for a Scholarly Concentration earn eight weeks non-clinical elective credit toward graduation and a Scholarly Concentration designation on their transcript, which can also be added to their curriculum vitae and other professional documentation. Graduates are also recognized at Commencement.

The Scholarly Concentrations Program has five primary goals:

- Increase student engagement at statewide campuses.
- Provide interdisciplinary focus that complements and enhances the core curriculum.
- Provide a longitudinal educational experience.
- Support student scholarship.
- Provide an additional credential to residency applications.

A program evaluation and assessment plan is being implemented to guide data collection, monitoring and regularly reporting. Some of our initial data around student engagement and student scholarship are included in this annual report.

The Scholarly Concentrations Program is being managed with a continuous quality improvement mindset. This involves not only collecting feedback as outlined in the program's evaluation plan, but also conducting lessons learned and idea generation

sessions among other activities. Key to successful quality improvement is responding to the data. In 2021, these included:

- adding Scholarly Concentrations Program requirements and designation to transcripts;
- designing "ideal state" for process improvements and systems to be part of the School's new student information management system;
- annual review of syllabi;
- adjustments based on students' end-of-course evaluations and other feedback; and
- continuing implementation of the program's evaluation plan.

The program is also a component and beneficiary of the grant IU School of Medicine received from the United States Health Resources and Services Administration. The mission of the grant is to create more medical school graduates with greater interest and appreciation for primary care and the ability to care for underserved populations. While many concentrations align with this mission, four will initially benefit as they focus on medically underserved and vulnerable populations: Care of Hispanic/Latino Patients (West Lafayette); Health Promotion and Disease Prevention (Muncie); Rural Health (Terre Haute); and Urban Medicine and Health Care Disparities (Northwest-Gary).

They will benefit from resources to support curriculum development, experiential training, faculty development and student scholarly work.



# Student Participation

Student interest and participation remained strong through 2021. During the first two years of the Scholarly Concentrations Program, both current and prospective students have had the opportunity to apply and enroll in the program. In 2021, prospective medical students could apply to an early decision program for admissions to a regional campus. While not a program to directly recruit into Scholarly Concentrations, the program was promoted to students as a compelling reason to apply and opportunity available to them. About 9 percent of the Class of 2025 was admitted through this effort, the latest tactic in a strategy to attract and retain students to regional campuses for all four years of medical school.

- As of September 2021, there were 306 IU medical students enrolled in scholarly

concentrations, about half at regional campuses, and two-thirds of those are on their home campus concentration. This was before students in the Class of 2025 were recruited to the program. Approximately 110 first-year medical students have indicated their intention to enroll in Spring 2022 or began a concentration this academic year.

- Our first program graduates — six students in the Class of 2021 — successfully completed the program while showing true pilot spirit. Seventy-three participants in the Class of 2022 completed program requirements.
- The following table shows the number of students enrolled in the Scholarly Concentrations Program prior to the recruitment for the Class of 2025.

**“The Scholarly Concentration is a unique example of the kind of collaborative, innovative, interdisciplinary work that is possible at IU. Working with students from IU School of Medicine has been an excellent experience, and their scholarly projects have already made important contributions to the field of human sexuality and health.”**

**JESSICA HILLE, PHD, CO-DIRECTOR OF SCHOLARLY CONCENTRATION IN HUMAN SEXUALITY AND HEALTH, BLOOMINGTON**



# Scholarly Concentrations Program Enrollment

(As of September 2021)

Campus	Scholarly Concentration	Launch	Class of 2022	Class of 2023	Class of 2024	Enrollment as of 9/2021 prior to Class of 2025 recruitment
Bloomington	Human Sexuality and Health	2020	0	5	4	9
	Medical Education	2021	0	0	2	2
Evansville	Quality and Innovation in Health Care	2019	5	7	6	18
Fort Wayne	Health Integration and Healthy Aging	2019	2	3	3	8
Muncie	Health Promotion and Disease Prevention	2019	2	3	7	12
Northwest-Gary	Urban Medicine and Health Care Disparities	2019	9	4	6	19
South Bend	Ethics, Equity and Justice	2019	6	2	9	17
Terre Haute	Rural Health	2019	7	4	10	21
West Lafayette	Care of Hispanic/ Latino Patients	2019	3	6	6	14
	Biomedical Engineering and Applied Medical Technology	2020	3	4	9	16
Indianapolis	Genetics in Medicine	2019	7	2	6	15
Indianapolis	Health Information Technology	2019	1	2	3	6
Indianapolis	Medical Humanities	2020	0	9	14	23
Indianapolis	Biomedical Research	2021	1	0	12	13
Statewide	Business of Medicine	2019	22	21	19	62
Statewide	Public Health	2019	13	18	21	52
Statewide	Religion and Spirituality in Medicine	2021	0	0	4	4
<b>TOTALS</b>			<b>81</b>	<b>90</b>	<b>135</b>	<b>306</b>



# Graduate Spotlights

The following students in the IU School of Medicine Class of 2022 completed all their Scholarly Concentrations Program requirements and earned a Scholarly Concentrations designation. Congratulations!

## BIOMEDICAL ENGINEERING AND APPLIED MEDICAL TECHNOLOGY



### Natalie Campbell

**Campus:** West Lafayette

**Project:** Biomedical Engineering Advancements after Management of Myelomeningocele Study (MOMS): A Review

**Mentor:** Eric Nauman, PhD

**Residency:** Anesthesiology, University of North Carolina Hospitals



### Chelsey Witsberger

**Campus:** West Lafayette

**Project:** Starting a medical 3D printing lab for otolaryngology-head and neck surgery collaboration

**Mentor:** Avinash Mantravadi, MD

**Residency:** Otolaryngology, University of Michigan Health System

## BIOMEDICAL RESEARCH



### Andrew Thyen

**Campus:** West Lafayette

**Project:** TBI-on-a-chip: Linking physical impact to neurodegeneration by deciphering primary and secondary injury mechanisms

**Mentor:** Edmond Rogers, PhD

**Residency:** Surgery-General, Indiana University School of Medicine



### Ryan Plunkett

**Campus:** Evansville

**Project:** An Automated, Physics-Based Approach to Mapping Cortical Growth in Toddlers

**Mentor:** Kara Garcia, PhD

**Residency:** Internal Medicine, St Louis University School of Medicine



## BUSINESS MEDICINE



### Payton Arnold

**Campus:** Indianapolis

**Project:** tEMR Surgical Case

**Mentor:** Todd Saxton, PhD

**Residency:** Surgery-General, Ascension St John Hosp-MI



### Jacob Graham

**Campus:** Indianapolis

**Project:** tEMR Neurology Stroke Teaching Case

**Mentor:** Todd Saxton, PhD

**Residency:** Radiology-Diagnostic, Eastern Virginia Medical School



### Shaneise Ellis

**Campus:** Indianapolis

**Project:** Genesaret Free Clinic (GFC) Service Line Optimization

**Mentor:** M. Kim Saxton, PhD, MBA

**Residency:** Pediatrics, McGaw Medical Center of Northwestern University



### John Hall

**Campus:** Northwest

**Project:** Avenues for Expansion and Optimization of AMPATH's Radiology Department in Western Kenya

**Mentor:** Todd Saxton, PhD

**Residency:** Emergency Medicine, Henry Ford Allegiance Health



### Jason Graf

**Campus:** Indianapolis

**Project:** Genesaret Free Clinic - Partnership Landscape

**Mentor:** M. Kim Saxton, PhD, MBA

**Residency:** Internal Medicine, Mayo Clinic Jacksonville



### Clarissa Hanna

**Campus:** Bloomington

**Project:** How Social Determinants of Health Affect Medication Adherence in Chronic Illnesses and Possible Business Ventures to Address Them

**Mentor:** Todd Saxton, PhD

**Residency:** Anesthesiology, Indiana University School of Medicine



**Lauren Howser**  
**Campus:** Indianapolis  
**Project:** tEMR Surgical Case  
**Mentor:** Christopher Frederick  
**Residency:** Otolaryngology, Medical University of South Carolina College of Medicine



**Danielle Kem**  
**Campus:** Bloomington  
**Project:** How Social Determinants of Health Affect Medication Adherence in Chronic Illnesses and Possible Business Ventures to Address Them  
**Mentor:** Todd Saxton, PhD  
**Residency:** Internal Medicine, University of Louisville School of Medicine



**Bryan Hyatt**  
**Campus:** Indianapolis  
**Project:** tEMR Neurology Stroke Teaching Case  
**Mentor:** Todd Saxton, PhD  
**Residency:** Neurology, Indiana University School of Medicine



**Jonathan McKeeman**  
**Campus:** Indianapolis  
**Project:** Center For Health Care Policy Growth Project  
**Mentor:** Joshua R. Vest PhD, MPH  
**Residency:** Orthopaedic Surgery, St Lukes Hosp-Bethlehem-PA



**Andrew Incandela**  
**Campus:** Northwest  
**Project:** Avenues for Expansion and Optimization of AMPATH's Radiology Department in Western Kenya  
**Mentor:** Todd Saxton, PhD  
**Residency:** Internal Medicine, University of Illinois College of Medicine at Chicago



**Amer Mohiuddin**  
**Campus:** Indianapolis  
**Project:** Anesthesia Institute for Medical Simulation  
**Mentor:** M. Kim Saxton, PhD, MBA  
**Residency:** Transitional Year, St Vincent Hospitals and Health Care Center



**Radoslaw Nabrzyski**

**Scholarly Concentration:**  
Business Medicine

**Campus:** Bloomington



**Lucas Rowe**

**Campus:** Indianapolis

**Project:** Pediatric tEMR Case

**Mentor:** Chris Frederick

**Residency:** Ophthalmology,  
Indiana University School of  
Medicine



**Satyanarayana  
Nelanuthala**

**Scholarly Concentration:**  
Business Medicine

**Campus:** Northwest

**Project:** Avenues for  
Expansion and Optimization  
of AMPATH's Radiology  
Department in Western Kenya

**Mentor:** Todd Saxton, PhD

**Residency:** Surgery-General,  
Baylor College of Medicine



**Katherine Wierzbowski**

**Campus:** Northwest

**Project:** Pediatric tEMR Case

**Mentor:** Todd Saxton, PhD

**Residency:** Pediatrics,  
University of Iowa Hospitals  
and Clinics



**Ruben Prado**

**Campus:** Indianapolis

**Project:** Genessaret  
Free Clinic - Partnership  
Landscape

**Mentor:** M. Kim Saxton, PhD,  
MBA

**Residency:** Surgery-General,  
Florida Atlantic University  
Charles E. Schmidt College of  
Medicine



**David Wong**

**Campus:** Bloomington

**Project:** How Social  
Determinants of Health Affect  
Medication Adherence in  
Chronic Illnesses and Possible  
Business Ventures to Address  
Them

**Mentor:** Todd Saxton, PhD

**Residency:** Internal Medicine,  
Loyola University Medical  
Center





**Ajlal Zaidi**

**Campus:** Indianapolis

**Project:** GFC Service Line Optimization

**Mentor:** M. Kim Saxton, PhD

**Residency:** Internal Medicine, Southern Illinois University School of Medicine



**Fiorella Yep Mendizaba**

**Campus:** West Lafayette

**CARE OF HISPANIC/LATINO PATIENTS**



**Austin Dukes**

**Campus:** Bloomington

**Project:** Latino Health & Workforce Study

**Mentor:** Melinda Grismer

**Residency:** Pediatrics, Nationwide Childrens Hosp- OH

**ETHICS, EQUITY, AND JUSTICE**



**Ryan Gandy**

**Campus:** South Bend



**Sydney Rivera**

**Campus:** West Lafayette



**Michael Harding**

**Campus:** South Bend

**Project:** I am my own person and I have my own beliefs: Minor Views of Consent for HIV Biomedical Prevention Research

**Mentor:** Mary Ott, MD

**Residency:** Pediatrics, Indiana University School of Medicine





**Bethany Lutter**

**Campus:** South Bend  
**Project:** Lower Socioeconomic Status Students Performance on the MCAT  
**Mentor:** Antwione Haywood, PhD  
**Residency:** Anesthesiology, McGaw Medical Center of Northwestern University



**Anna Gensel**

**Campus:** Indianapolis



**Madeline Smith**

**Campus:** South Bend  
**Project:** Timeout: Parental Subversion of Concussion Protocols for Untimely Return-to-Play  
**Mentor:** Kathleen Eggleston, PhD  
**Residency:** Orthopaedic Surgery, Wake Forest University Baptist Medical Center



**Abigail Hadley**

**Campus:** Indianapolis  
**Project:** Hyperglycemia cooperates with Tet2 heterozygosity to induce leukemia driven by pro-inflammatory cytokine induced lncRNA Morbid  
**Mentor:** Reuben Kapur, PhD  
**Residency:** Internal Medicine/ Pediatrics, University of Michigan Health System

**GENETICS IN MEDICINE**



**Adam Corya**

**Campus:** Indianapolis  
**Project:** Individualized exercise and the health of the AYA cancer survivor population  
**Mentor:** Jamie Renbarger, MD  
**Residency:** Family Medicine, McGaw Medical Center of Northwestern University



**Matthew Lang**

**Campus:** Indianapolis  
**Project:** Vascular dysfunction in retinitis pigmentosa  
**Mentor:** Alon Harris, PhD  
**Residency:** Family Medicine, Amita St Joseph Hosp-IL





**Nicholas Polster**

**Campus:** Indianapolis

**Project:** Association Between IL6R Polymorphisms and Cachexia Phenotype in Patients with Pancreatic Ductal Adenocarcinoma

**Mentor:** Teresa A. Zimmers, PhD

**Residency:** Pathology-Anatomic and Clinical, Indiana University School of Medicine

**HEALTH INFORMATION TECHNOLOGY**



**Colton Junod**

**Campus:** Terre Haute

**Project:** Utilization of ICD-10 Classification Codes for Social Determinants of Health

**Mentor:** Joshua R. Vest PhD, MPH

**Residency:** Emergency Medicine, Indiana University School of Medicine



**Alison Schmidt**

**Campus:** Indianapolis

**Project:** SHROOM3 is a novel component of the planar cell polarity pathway whose disruption causes congenital heart disease

**Mentor:** Matthew Durbin, MD

**Residency:** Obstetrics and Gynecology, University of Michigan Health System

**HEALTH INTEGRATION AND HEALTHY AGING**



**Samuel Stegelmann**

**Campus:** Fort Wayne

**Project:** Effect of delay in thrombectomy reperfusion on patient functional outcome after acute ischemic stroke

**Mentor:** Fen-Lei Chang, MD, PhD



**Sydney Willhite**

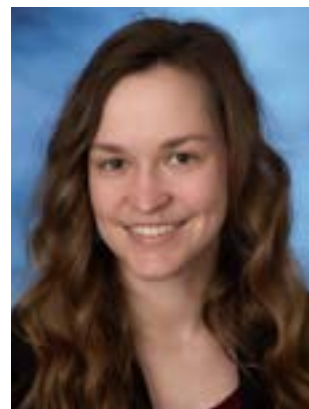
**Campus:** Bloomington

**Project:** Chemical-induced aseptic meningitis as a result of intrathecal hydromorphone therapy: Case report

**Mentor:** Sangeeta Juloori, MD

**Residency:** Surgery-General, U Tennessee Grad SOM-Knoxville

**HEALTH PROMOTION AND DISEASE PREVENTION**



**Brooke Strader**

**Campus:** Muncie

## PUBLIC HEALTH



### Stephanie Asdell

**Campus:** Indianapolis

**Project:** Barriers to offering same-day, all-options contraception at a student-run free clinic

**Mentor:** Jeffrey F. Peipert, MD, PhD

**Residency:** Obstetrics and Gynecology, University of Chicago Medical Center



### Emily Coleman

**Campus:** Indianapolis

**Project:** A rapid review of devices to prevent neonatal hypothermia among premature, low birthweight, and small-for-gestational age neonates in high, middle, and low-income countries (2016-2021)

**Mentor:** Sherri Bucher, PhD

**Residency:** Internal Medicine/Pediatrics, Indiana University School of Medicine



### McKenzie Barber

**Campus:** Indianapolis

**Project:** Evaluating the Efficacy of Implementing a Sexually Transmitted Infection Testing and Treatment Protocol in a Student-Run Free Clinic

**Mentor:** Javier Sevilla, MD

**Residency:** Obstetrics and Gynecology, Washington University/B-JH/SLCH Consortium



### Livia Hopper

**Campus:** Evansville

**Project:** Patient and community characteristics associated with high-cost imaging: results from a linked state cancer registry and health information exchange database

**Mentor:** David Haggstrom, MD

**Residency:** Emergency Medicine, Baylor College of Medicine



### Mikayla Burrell

**Campus:** Fort Wayne

**Project:** Identifying Children with Medical Complexity for Care Coordination in Primary Care Settings

**Mentor:** Mary Ciccarelli, MD

**Residency:** Pediatrics, Cincinnati Children's Hospital Medical Center



### Amani Karim

**Campus:** Indianapolis

**Project:** A rapid review of devices to prevent neonatal hypothermia among premature, low birthweight, and small-for-gestational age neonates in high, middle, and low-income countries (2016-2021)

**Mentor:** Sherri Bucher, PhD





**Gabrielle Michaeli**

**Campus:** Indianapolis  
**Project:** Completion of Social Determinants of Health Screenings in Pediatric Practices Participating in a Quality Improvement Initiative  
**Mentor:** Sarah Stelzner, MD  
**Residency:** Emergency Medicine, Indiana University School of Medicine



**Grace Rushton**

**Scholarly Concentration:** Public Health  
**Campus:** Bloomington  
**Project:** Characterizing Empiric Antimicrobial Usage Among Newborns in Tertiary Centers in Sub-Saharan Africa  
**Mentor:** Osayame A. Ekhaguere, MBBS, MPH  
**Residency:** Pediatrics, Nationwide Childrens Hosp-OH



**Pooja Pandita**

**Campus:** Indianapolis  
**Project:** Completion of Social Determinants of Health Screenings in Pediatric Practices Participating in a Quality Improvement Initiative  
**Mentor:** Sarah Stelzner, MD  
**Residency:** Internal Medicine, University of California (San Diego) Medical Center



**Cameron Smock**

**Campus:** Indianapolis  
**Project:** Diabetes self-management education and support at student-run free clinics: a narrative review  
**Mentor:** Javier Sevilla-Martir, MD  
**Residency:** Physical Medicine and Rehabilitation, Mayo Clinic College of Medicine and Science



**Kayla Powell**

**Campus:** Indianapolis

**QUALITY INNOVATION IN HEALTH CARE**



**Erin Deist**

**Campus:** Evansville  
**Project:** HPV Knowledge and Vaccine Acceptance at the Vanderburgh County Health Department: A Quality Improvement Project  
**Mentor:** Erin Reese, RN  
**Residency:** Obstetrics and Gynecology, St Vincent Hospitals and Health Care Center





**Morgan Saiko-Blair**

**Campus:** Evansville  
**Project:** Analysis and Characterization of the Utilization of Peripheral Intravenous Catheters at a Community Hospital  
**Mentor:** Kara Garcia, PhD  
**Residency:** Obstetrics and Gynecology, Mercy Hospital St Louis-MO



**Ellen Yos**

**Campus:** Evansville  
**Project:** Readmission Rates in Heart Failure Patients with Dedicated Post-Discharge Clinic Follow-up  
**Mentor:** Tapan Mehta, MD  
**Residency:** Internal Medicine, Grand Strand Reg Med Ctr-SC



**Jered Schenk**

**Campus:** Evansville  
**Project:** Analysis and Characterization of the Utilization of Peripheral Intravenous Catheters at a Community Hospital  
**Mentor:** Kara Garcia, PhD  
**Residency:** Internal Medicine, Medical University of South Carolina College of Medicine

**RURAL HEALTH**



**Shan Antony**

**Campus:** Terre Haute  
**Project:** Rural versus Urban COVID-19 Information Seeking and Vaccine Uptake  
**Mentor:** Ellen Ireland, PhD  
**Residency:** Family Medicine, Memorial Hospital of South Bend



**Lexis Will**

**Campus:** Evansville  
**Project:** Analysis and Characterization of the Utilization of Peripheral Intravenous Catheters at a Community Hospital  
**Mentor:** Kara Garcia, PhD  
**Residency:** Internal Medicine, University of Texas Southwestern Medical Center



**Emma Eckrote**

**Campus:** Terre Haute  
**Project:** Community Birth in Indiana: The Motivations of Rural Women Choosing Out of Hospital Delivery  
**Mentor:** Robin Danek, MPH  
**Residency:** Pediatrics/ Psychiatry/Child and Adolescent Psychiatry, Indiana University School of Medicine





**Justin Kryshak**  
**Campus:** Terre Haute  
**Project:** Review of Electronic Health Record Methods of Data Extraction  
**Mentor:** Ellen Ireland, PhD  
**Residency:** Family Medicine, Aurora Health Care



**Sarah Swiezy**  
**Campus:** Terre Haute  
**Project:** Rural versus Urban COVID-19 Information Seeking and Vaccine Uptake  
**Mentor:** Ellen Ireland, PhD  
**Residency:** Obstetrics and Gynecology, Washington University/B-JH/SLCH Consortium



**Reese Miller**  
**Campus:** Terre Haute  
**Project:** Rural versus Urban COVID-19 Information Seeking and Vaccine Uptake  
**Mentor:** Ellen Ireland, PhD  
**Residency:** Anesthesiology, Indiana University School of Medicine



**Quinton Thompson**  
**Campus:** Terre Haute  
**Project:** Perceptions on Telehealth initiated Opioid Use Disorder Treatment during the COVID-19 Pandemic  
**Mentor:** Randall Stevens, MD  
**Residency:** Internal Medicine, Indiana University School of Medicine



**Brycen Ratcliffe**  
**Campus:** Terre Haute  
**Project:** Rural and Urban EMS level of comfort with overdose treatment  
**Mentor:** Robin Danek, MPH  
**Residency:** Surgery-General, University of Missouri-Columbia School of Medicine

**URBAN MEDICINE AND HEALTH CARE DISPARITIES**



**Chiamara Anokwute**  
**Campus:** Northwest  
**Project:** The Impact of P.O.P. on Teen violence and the anti-violence programing in Northwest Indiana and Greater Chicagoland area  
**Mentor:** Michael McGee, MD, MPH  
**Residency:** Pediatrics/ Emergency Medicine, Indiana University School of Medicine



**Kesha Kandoi**

**Campus:** Bloomington  
**Project:** Barriers to Outreach and Recruitment of South Asians in Biomedical Research  
**Residency:** Pediatrics, University of Chicago Medical Center



**Natasa Petreska**

**Campus:** Northwest  
**Project:** Personal Experience: Working with the Foodbank of Northwest Indiana  
**Mentor:** Amy Han, PhD



**Magdalena Maginot**

**Campus:** Northwest  
**Project:** Review of Survey Language on Racism as an Adverse Childhood Experience  
**Mentor:** Amy Han, PhD  
**Residency:** Psychiatry, University of Iowa Hospitals and Clinics



**Derek Sloss**

**Campus:** Northwest  
**Project:** The Impact of P.O.P. on Teen violence and the anti-violence programing in Northwest Indiana and Greater Chicagoland area  
**Mentor:** Michael McGee, MD, MPH  
**Residency:** Psychiatry, Community Health Network



**Erin Perez**

**Campus:** Northwest  
**Project:** Fighting Hunger through Nutrition Education and Community Partnership  
**Mentor:** Elizabeth Ryan, EdD  
**Residency:** Pediatrics, University of Florida College of Medicine



**Cody Stewart**

**Campus:** Northwest







**Blagojce Trimoski**

**Campus:** Northwest

**NOT PICTURED:**

**Gracelyn Bose**

**Scholarly Concentration:**  
Business Medicine

**Campus:** Indianapolis

**Courtney Raab**

**Scholarly Concentration:**  
Urban Medicine and Health  
Care Disparities

**Campus:** Northwest

**Joel Gerig**

**Scholarly Concentration:**  
Ethics, Equity, and Justice

**Campus:** South Bend





**Working with our medical students with their projects has been one of the more rewarding aspects of our Scholarly Concentration (Urban Medicine and Healthcare Disparities). Knowing that they will take this experience and knowledge with them to the next chapter of their medical education journey is comforting. Also, hearing that they are asked repeatedly about their Scholarly Concentration experience during residency interviews is just icing on the cake!**

**AMY HAN, PHD, CO-DIRECTOR OF SCHOLARLY CONCENTRATION IN URBAN MEDICINE AND HEALTH CARE DISPARITIES, NORTHWEST-GARY**

**The Scholarly Concentration in Public Health allowed me to complement my medical education with essential knowledge of national and local healthcare systems. This program allowed me to continue fueling my curiosity and critical thinking skills in ways that have made me a better student doctor and future physician.**

**SUSHUMA CHOWDARY YARLAGADDA, MD, NEUROLOGY RESIDENT, EMORY UNIVERSITY  
IUSM CLASS OF 2021, SCHOLARLY CONCENTRATION IN PUBLIC HEALTH**

# Each Scholarly Concentration is composed of the following:

## Fundamentals of Research and Scholarship

This course is foundational to all Scholarly Concentrations. Students develop fundamental skills in research study design, scientific inquiry and methods, data management, statistical analysis and human subjects research ethics.

## Topic-Specific Coursework

Each concentration includes between two and six courses or experiences that empower students to explore their chosen topic.

## Scholarly Project

Students gain firsthand experience by developing and conducting scholarly inquiry appropriate to their concentration. Completion of the project will form the basis of a scholarly concentration product.

## Scholarly Product

A scholarly work product is required, typically a manuscript submitted to a peer-reviewed journal. Students will also present a poster at IUSM Education Day.

# Roles and Responsibilities

### Executive Associate Dean:

Vision and leadership; review and approve topics; partnerships

### Curriculum Council Steering Committee:

Curricular leadership; review and approval of proposals

### Scholarly Concentrations Program Ad-Hoc

**Committee:** Initial review and recommendation for approval to Steering Committee

### Program Manager/Project Manager:

Directs program statewide; program, policies and systems development and implementation

### Scholarly Concentrations Program Faculty Lead:

Curricular review; evaluation and assessment

### Scholarly Concentrations Program Coordinator:

Coordinates various aspects of program

### Associate Dean and Director of Regional Campuses:

Campus champion; responsible for overall campus success

### Scholarly Concentration Co-Directors:

Development and management of concentration, curriculum, scholarly projects. Student success

### Scholarly Concentration Project Mentors:

Guide students through scholarly project, manuscript, poster

### Course Directors:

Development of course syllabus, course content, assessment

### Liaison Librarians:

Support students and educators through library resources

### Lead Advisors:

Student academic advising

## Biomedical Engineering and Applied Medical Technology – West Lafayette (launched 2020)

A partnership with Purdue University's Weldon School of Biomedical Engineering, this concentration allows students to develop their understanding and application of biomedical engineering for the ethical design, development and translation of medical and related technologies. No engineering experience is necessary.

### Coursework

Introduction to Biomedical Engineering and Translation of Medical Technologies

Introduction to Customer Discovery

Fundamentals of Research and Scholarship

### Co-Directors

#### **Ray Munguia-Vazquez, MD, PhD**

Adjunct Clinical Assistant Professor of Otolaryngology-Head & Neck Surgery

#### **Andrew O. Brightman, PhD**

Assistant Head for Academic Affairs and Associate Professor of Engineering Practice, Weldon School of Biomedical Engineering, Purdue University

#### **Craig Goergen, PhD**

Leslie A. Geddes Associate Professor of Biomedical Engineering, Weldon School of Biomedical Engineering, Purdue University

### West Lafayette Regional Campus Dean and Director

#### **Matthew Tews, DO, MS**

### Staff, Mentors & Instructors

Aaron Lottes, PhD, Associate Professor of Engineering Practice, Biomedical Engineering, Purdue University

Matt Lynall, PhD, Clinical Professor and Director, Purdue NSF I-Corps Site and Midwest I-Corps Node, Krannert School of Management, Purdue University

Doug Brubaker, PhD, Assistant Professor of Biomedical Engineering, Purdue University

Deva Chan, PhD, Assistant Professor of Biomedical Engineering, Purdue University

Maria Dadarlat, PhD, Assistant Professor of Biomedical Engineering, Purdue University

Melissa Kacena, PhD, Professor, Vice Chair for Research, Department of Orthopaedic Surgery

Chi Hwan Lee, PhD, Associate Professor of Biomedical Engineering and Mechanical Engineering, Purdue University

Jacqueline Linnes, PhD, Marta E Gross Assistant Professor, Biomedical Engineering, Purdue University

Eric Nauman, MsME, PhD, Director of Office of Professional Practice, Professor of Mechanical Engineering, Professor of Basic Medical Sciences and Biomedical Engineering, Director of Honors Program, College of Engineering, Purdue University

Anne Sereno, PhD, Professor of Psychological Sciences and Biomedical Engineering

Riyi Shi, PhD, Mari Hulman George Endowed Professor of Applied Neuroscience, Director, Center for Paralysis Research, College of Veterinary Medicine, Professor of Basic Medical Science, Purdue University

Matthew Ward, PhD, Assistant Professor of Biomedical Engineering, Purdue University

### Student Participants

#### Class of 2024

Evan Anderson - West Lafayette  
Sydney Quinn Clark - West Lafayette  
Christopher Elias Dalloul - Terre Haute  
Aditya Prashant Desai - West Lafayette  
Maria Feucht - Indianapolis  
Sunland Lee Gong - Terre Haute  
John Michael Sakaleros - West Lafayette  
Grant Michael Tomlin - West Lafayette  
Alan-thomas Loc Trinh - South Bend

#### Class of 2023

Hayley Nina Chan - West Lafayette  
Meng-Yun Ku - West Lafayette  
Shiv Ranjan Panigrahi - West Lafayette  
Frank Rigueiro - West Lafayette

## Biomedical Research – Indianapolis (launched 2021)

In this concentration, students engage in the critical concepts that underpin biomedical and clinical research, acquiring essential research tools including critical reasoning skills, using the scientific method in design of study, research rigor and reproducibility, research ethics, and disseminating research results for peer review. Students will also be introduced to various resources offered through the Indiana Clinical and Translational Sciences Institute (CTSI) to assist with biomedical research, including human subjects training, the Clinical Research Center, and the Project Development Team. Students are required to participate in Indiana University Medical Student Program for Research and Scholarship (IMPRS) during the summer between their first and second years of medical school.

### Coursework

Immersion in Clinical and Patient-Oriented Research

Clinical Research Methods

Research Topics in Medicine

Fundamentals of Research and Scholarship

### Co-Directors

#### **Erika R. Cheng, PhD**

Assistant Professor of Pediatrics

#### **Aaron E. Carroll, MD**

Associate Dean for Research Mentoring and Chief Health Officer

### Student Participants

#### Class of 2024

Ethan Cornwell – Evansville

Clare Gallagher – West Lafayette

Erica Geers – Evansville

Samuel Kaefer – Indianapolis

Thomas Kleckner – Evansville

Eyram Kpenu – Northwest

Eugene Lee – Indianapolis

Tommaso Mason – Indianapolis

Austin Meyer – Indianapolis

Mira Prabhakar – Indianapolis

Brandon Sizemore – Bloomington

Deepthi Thadasina – Indianapolis

### Staff, Mentors & Instructors

Lisa G Yazel, EdD, Course Administrator

Leonard Buller, MD, Assistant Professor of Clinical Orthopaedic Surgery

Michael Meneghini, MD, Professor of Clinical Orthopaedic Surgery

Andrew Otte, PhD, Research Assistant Professor of Biomedical Engineering

Sikandar Khan, MS, DO, Assistant Professor of Medicine

Michelle Starr, MD, Assistant Professor of Pediatrics

Michael Veronesi MD, PhD, Assistant Professor of Radiology & Imaging Sciences

Bo Zhao, PhD, Assistant Professor of Otolaryngology-Head & Neck Surgery

Jennifer Eikenberry, MD, Associate Professor of Clinical Ophthalmology

Mark Kelley, PhD, Betty and Earl Herr Professor of Pediatric Oncology Research

Mike Sturek, PhD, Professor of Anatomy, Cell Biology & Physiology

Scott Snyder, PhD, Associate Professor of Radiology & Imaging Sciences

Troy Markel, MD, Associate Professor of Surgery

Chandan Sen, PhD, J. Stanley Battersby Chair and Professor of Surgery, Director of the Indiana Center for Regenerative Medicine and Engineering and Executive Director of the Comprehensive Wound Care Center at IU Methodist Hospital

Burcin Ekser, MD, PhD, Associate Professor of Surgery

Kara Garcia, PhD, Assistant Research Professor of Radiology & Imaging Sciences and Navigator for the Indiana Clinical and Translational Sciences Institute



## Care of Hispanic/Latino Patients – West Lafayette (launched 2019)

This scholarly concentration prepares students to provide culturally sensitive medical care to improve outcomes for the nation's growing Hispanic and Latino population. Additionally, students can improve Spanish-speaking fluency and practice using Spanish in clinical settings.

### Coursework

Introduction to Public Health  
Introduction to Care of Hispanic/  
Latino Patients  
Fundamentals of Research and  
Scholarship

### Co-Directors

**Ray Munguía-Vazquez, MD, PhD**  
Adjunct Clinical Assistant  
Professor of Otolaryngology-  
Head & Neck Surgery

**Cecilia Tenorio, MA**  
Senior Lecturer, Director of Minor  
in Spanish for the Professions,  
Purdue University

### West Lafayette Regional Campus Dean and Director

**Matthew Tews, DO, MS**

### Staff, Mentors & Instructors

Françoise Brosseau-Lapré, PhD,  
CCC-SLP, Assistant Professor,  
Speech Language & Hearing  
Sciences, Purdue University

Gregory J. Loomis, MD, Clinical  
Assistant Professor of Neurological  
Surgery

Melinda Grismer, MS, Purdue  
Community and Regional  
Development Specialist

Peter S. Pang, MD, Chair,  
Department of Emergency  
Medicine

Thomas Issac Jones, MD, Clinical  
Assistant Professor of Medicine

Ashley D. Meagher, MD, Assistant  
Professor of Surgery

Jordan A. Holmes, MD, Assistant  
Professor of Radiation Oncology

Nikki Messmore, MS, Program  
Director of Community & Civic  
Engagement

Louis B. Cantor, MD, Professor  
Emeritus of Glaucoma Research  
and Education

Timothy B. O'Donnell, MD, Clinical  
Assistant Professor of Family  
Medicine

Jayne R. Rayman, IUSM-  
West Lafayette Outreach and  
Communications Specialist

### Student Participants

#### Class of 2024

Sophia Bertot - West Lafayette  
Joseph Clemens - West Lafayette  
Asif Hossain - West Lafayette  
Kristen Lentsch - West Lafayette  
Jared Routsong - West Lafayette  
Adrienne Sowers - West Lafayette

#### Class of 2023

Christian Arce Guzman - West Lafayette  
Catherine Burns - West Lafayette  
Valerie Gambetta - West Lafayette  
Claire Marks - West Lafayette  
Mark Westbroek - West Lafayette  
Nicholas Young - West Lafayette



## Ethics, Equity and Justice – South Bend (launched 2019)

This concentration provides the basic skills for separating the morally beneficial from the morally troubling practices of medicine and enables future physicians to better serve and advocate for their most vulnerable patients. A range of topics are covered, from clinical ethics to health equity. The other feature of the Scholarly Concentration in South Bend is the access to mentors from IU School of Medicine, Notre Dame and other community partners who are engaged in and committed to a broad spectrum of topics that fit within this concentration.

### Coursework

Introduction to Medical Ethics  
 Ethics and Health Equity  
 Bioethics Journal Club  
 Fundamentals of Research and Scholarship

### Co-Directors

#### Joe Kotva, PhD

Adjunct Assistant Professor of Medicine

#### Mark D. Fox, MD, PhD

Associate Dean and Director, IU School of Medicine  
 -South Bend

### Staff, Mentors & Instructors

Dave Lassen, PhD, Community-Engaged Learning Program Director, Center for Social Concerns, University of Notre Dame	Center for the Homeless Depaul Center Unity Gardens La Casa de Amistad
Kathleen Eggleson, PhD, Assistant Professor of Clinical Medicine, IU South Bend	St. Joseph County Health Department
Mary A. Ott, MA, Professor of Pediatrics, Faculty Investigator, Indiana University Center for Bioethics	Maple City Health Center Mosaic Health & Healing Arts Real Services
Gail McGuire, PhD, Professor of Sociology, Director of Community Engagement, IU-South Bend	Youth Service Bureau

### Student Participants

#### Class of 2024

Malorie Cullers – South Bend  
 Megan Elizabeth Swartzendruber Eigsti - South Bend  
 Rylee Lynn Friel - South Bend  
 Tyler Joseph Gabrelcik - South Bend  
 Jack Henry Bicalho Hibbard - South Bend  
 Mary Margaret Holohan - South Bend  
 Eilis Sioban Kilbride - South Bend  
 Rebecca McCartney - South Bend  
 Caitlyn Mulcahey – South Bend  
 Malorie Rose Weldy - South Bend

#### Class of 2023

Daniel Abdel-Karim Armounfelder - South Bend  
 Alexis Faith George - South Bend

## Genetics in Medicine – Indianapolis (launched 2019)

This concentration provides a deep dive into the latest genetic developments and concepts that are transforming the practice of medicine. Students may explore clinical research, clinical case reports with literature reviews, or other areas of interest in the rapidly changing field of medical genetics.

### Coursework

Clinical Case Conference  
Genetics Clinic Experience  
Effective Communications in Genomic Medicine  
Genomic Medicine Journal Club  
Online Clinical Case Review  
Essential Lab Rotation  
Fundamentals of Research and Scholarship

### Co-Directors

#### **Daniel R. Brady, PhD**

Lecturer in Medical & Molecular Genetics

#### **Theodore Wilson, MD**

Lecturer in Medical & Molecular Genetics

### Staff, Mentors & Instructors

Stephanie Sharp, MD, Teaching Faculty  
Amy Breman, PhD, Cytogenetics Clinical Laboratory Director  
Marcus Miller, PhD, Biochemical Genetics Laboratory Director  
Molly McPherson, MD, Assistant Professor  
Erin Conboy, MD, Assistant Professor  
Cass Muesing, MS, CG(ASCP)<sup>CM</sup> Cytogenetics Clinical Laboratory Education Supervisor  
Evan-Jacob Garcia, MD, Medical Genetics Resident

### Student Participants

#### **Class of 2024**

Ashwin Biju – Indianapolis  
Christian Karcher – Indianapolis  
Folami Morris – Indianapolis  
Jourdan Owens – Indianapolis  
Willa Sasso – Indianapolis  
Camilo Suescum - Indianapolis

#### **Class of 2023**

Vijai Kumar Dorairaj Dharla - Indianapolis  
Margaret Kathryn Rose - Indianapolis

#### **Class of 2026** (*leave of absence, graduate study or research*)

Cristina Contreras Burrola - Indianapolis  
Helapita Ralalage Sagara Wijeratne - Indianapolis

#### **Class of 2027** (*leave of absence, graduate study*)

Kaylee Tutrow - Indianapolis



## Health Information Technology – Indianapolis (launched 2019)

A partnership with the Regenstrief Institute, this concentration provides students with an understanding of the components and relationships necessary to create, implement and use clinical information systems effectively. Through coursework and hands-on experiences, students learn to leverage technology systems in increasingly complex health care systems.

### Coursework

Health Informatics Scholarship  
 Public Health Informatics Scholarship  
 Fundamentals of Research and Scholarship

### Co-Directors

**Eneida A. Mendonca, MD, PhD, FAAP, FACMI**  
 Professor of Pediatrics and Professor of Biostatistics, Vice President for Research Development and Interim Director, Center for Biomedical Informatics, Regenstrief Institute, Inc.

**Brian E. Dixon, PhD**  
 Research Scientist, Center for Biomedical Informatics and Center for Health Services Research, Regenstrief Institute and Director of Public Health Informatics, Regenstrief Institute, Inc.

**John T. Finnell, MD**  
 Professor of Clinical Emergency Medicine

### Student Participants

#### Class of 2024

Jay Chopra – Bloomington  
 Kayla Higgins – Indianapolis  
 Eashan Kumar – Indianapolis

#### Class of 2023

Fahad Hasnain - Indianapolis  
 Justin Nevin Waran - Indianapolis

### Staff, Mentors & Instructors

Kurt Kroenke, MD, Chancellor's Professor, IUPUI, Professor of Medicine and Regenstrief Institute Research Scientist

Jess Halterman, BS, Fellowship Coordinator, Center for Biomedical Informatics, Program Coordinator

Bryan McConomy, MD, Clinical Informatics Fellow, Regenstrief Institute

Erick Christensen, MD, Clinical Informatics Fellow, Regenstrief Institute

Randall Grout, MD, Assistant Professor of Pediatrics

Josh Vest, PhD, Professor of Health Policy & Management

Suranga Kasthurirathne, PhD, Assistant Professor of Pediatrics

Titus Schleyer, PhD, Professor of Medicine

Shaun Grannis, MD, Professor of Family Medicine

## Health Integration and Healthy Aging – Fort Wayne (launched 2019)

This concentration is based on health systems science - the “third science” in medicine after basic and clinical sciences. With an emphasis on patient-centered care and the lens of healthy aging, it focuses on improving outcomes while reducing costs of health care for patients/populations in a community setting.

### Coursework

Introduction to Public Health  
Health System Integration in the Context of Healthy Aging  
Journal Club  
Fundamentals of Research and Scholarship

### Co-Directors

#### **Robert D. Sweazey, PhD**

Assistant Director, IUSM-Fort Wayne

#### **Leslie A. Hoffman, PhD**

Assistant Professor of Anatomy, Cell Biology and Physiology

### Fort Wayne Regional Campus Dean and Director

#### **Fen-Lei Chang, MD, PhD**

### Staff, Mentors & Instructors

Fen-Lei Chang, MD, PhD, Associate Dean and Director, IU School of Medicine-Fort Wayne

Valerie Yeager, PhD, Associate Professor, Richard M. Fairbanks School of Public Health

Scott Myers, MD, Assistant Clinical Professor

Glenda Westmoreland, MD, MPH, AGSF, Director of Geriatrics Education, Department of Medicine

Justin Blackburn, PhD, Associate Professor, Health Policy and Management, HPM, PhD Program Director, Richard M. Fairbanks School of Public Health

### Student Participants

#### **Class of 2024**

Aysha Rafique Chaudhary - Fort Wayne  
Samuel Elias Griffin - Fort Wayne  
Aaron Tyler Jones - Fort Wayne  
Varun Ashutosh Rao - Fort Wayne  
Michael R Weber - Fort Wayne

#### **Class of 2023**

Kendra Jean Hollenbeck - Fort Wayne  
Bret Patrick Lawson - Fort Wayne  
Cade Plyer - Fort Wayne





## Health Promotion and Disease Prevention – Muncie (launched 2019)

In this concentration, students learn how to help patients implement evidence-based lifestyle choices leading to better health outcomes. Students work with a team of exercise physiologists, nutritionists, mental/behavioral health counselors, social workers and other health professionals and have access to resources at the Human Performance Laboratory at Ball State University.

### Coursework

Introduction to Public Health or Principles of Lifestyle Therapeutic Approaches

Lifestyle Medicine

Fundamentals of Research and Scholarship

### Co-Directors

#### **Larry B. Fromm, PhD**

Adjunct Professor of Biochemistry & Molecular Biology

#### **Michael D. Litt, PhD**

Adjunct Associate Professor of Medical & Molecular Genetics

### Muncie Regional Campus Dean and Director

#### **Derron Bishop, PhD**

### Staff, Mentors & Instructors

Derron Bishop, PhD, Associate Dean and Director, IU School of Medicine-Muncie

Lynn Witty, MD, Adjunct Clinical Assistant Professor of Medicine

Sula Hood, PhD, MPH, Assistant Professor, Richard M. Fairbanks School of Public Health

### Student Participants

#### **Class of 2024**

Manhalh Bakdash - Muncie

Colton Goebel - Muncie

Cameran Lynn Jones - Muncie

Jordan James Koczenasz - Muncie

#### **Class of 2023**

Mackenzie Louise Pairitz - Indianapolis

Priya Soni - Muncie

Julie Marie Vaughan - Terre Haute



## Human Sexuality and Health – Bloomington (launched 2020)

A partnership with the world-renown Kinsey Institute, this concentration helps students understand how various topics related to sex, gender and sexuality intersect with the practice of medicine. It also provides an opportunity to work with Kinsey researchers.

### Coursework

Introduction to Human Sexuality  
Critical Issues in Sexuality and Health  
Fundamentals of Research and Scholarship

### Co-Directors

#### **Charles N. Rudick, PhD**

Assistant Director of Medical Education, IU School of Medicine-Bloomington

#### **Justin R. Garcia, PhD**

Executive Director, The Kinsey Institute  
Ruth N. Halls Associate Professor of Gender Studies

#### **Jessica Hille, PhD**

Assistant Director for Education, The Kinsey Institute

### Bloomington Regional Campus Dean and Director

#### **Katherine M. Hiller, MD, MPH**

### Staff, Mentors & Instructors

Greg Carter, PhD, MSN. Assistant Professor, IU School of Nursing

Jacek Kolacz, PhD, Assistant Research Scientist, The Kinsey Institute

Virginia Vitzthum, PhD, Senior Scientist, The Kinsey Institute

Catherine Sherwood-Laughlin, HSD, MPH  
Clinical Professor, Richard M. Fairbanks School of Public Health

Alison Greene, PhD, Assistant Professor, Richard M. Fairbanks School of Public Health

Polly Husmann, PhD, Associate Professor of Anatomy, Cell Biology & Physiology

Zoe Peterson, PhD, Senior Scientist, The Kinsey Institute

### Student Participants

#### **Class of 2024**

Victoria Ann Cook - Bloomington  
Maya Elena Lee - Bloomington  
Sydney Mae Lovins - Bloomington  
Katherine Mary Lee Trudeau - Bloomington

#### **Class of 2023**

Christine Julia Ake - Bloomington  
Lucy Delany Brown - Indianapolis  
Brianna Renee Mahnke - Bloomington  
Keeley Dane Newsom - South Bend  
Michael Jay Riddle - Bloomington



## Medical Education – Bloomington (launched 2021)

In this concentration, students learn skills and practices to be effective medical educators and clinical instructors. They examine how to assess teaching effectiveness, student learning and knowledge gains through an introduction to medical education research, methodologies and scholarship literature.

### Coursework

Pedagogical Methods in the Health Sciences  
Introduction to Clinical Case Study Development for Non-didactic Learning  
Fundamentals of Research and Scholarship

### Staff, Mentors & Instructors

Dan Lodge-Rigal, MD, Associate Professor of Clinical Pathology and Laboratory Medicine  
David Rodgers, EdD, EMT-P, NRP, FAHA, Clinical Assistant Professor of Medicine  
Jessica Byram, PhD, Assistant Professor of Anatomy, Cell Biology & Physiology

### Co-Directors

**Charles N. Rudick, PhD**  
Assistant Director of Medical Education, IUSM-Bloomington  
**Valerie D. O'Loughlin, PhD**  
Director of Undergraduate Medical Education, IU School of Medicine-Bloomington  
**Polly R. Husmann, PhD**  
Assistant Professor of Anatomy, Cell Biology & Physiology  
**Bloomington Regional Campus Dean and Director**  
**Katherine M. Hiller, MD, MPH**

### Student Participants

**Class of 2024**  
Elizabeth Hart - Bloomington  
Emily Merritt - Indianapolis

My participation in this concentration has only made me more certain of my desire to go into academic medicine and medical education. Between the courses, interactions with the faculty, and every experience I have had thus far with my project, the concentration has truly enriched my education and helped me to see where my future place in medicine might be.

EMILY MERRITT, CLASS OF 2024, SCHOLARLY CONCENTRATION IN MEDICAL EDUCATION, BLOOMINGTON



## Quality and Innovation in Health Care – Evansville (launched 2019)

This program trains future clinicians to improve quality, safety and efficiency in healthcare systems. Students are immersed in a hospital, clinic or health department as they implement and assess practical solutions to real-world problems. By participating in interactive, workshop-style courses alongside various health care professionals, students master widely recognized approaches for continuous improvement and design thinking to improve quality, safety and efficiency in health systems. Through completion of coursework and a quality improvement project, students can also earn Lean Six Sigma Green Belt certification.

### Coursework

Introduction to Health Care Innovation and Implementation

Lean Six Sigma for Health Care Professionals

Fundamentals of Research and Scholarship

### Co-Directors

#### **Kara Garcia, PhD**

Assistant Research Professor of Radiology & Imaging Sciences and Navigator for the Indiana Clinical and Translational Sciences Institute

#### **Arthur L. Chlebowski, PhD**

Adjunct Assistant Professor of Family Medicine, Associate Professor of Engineering, University of Southern Indiana

#### **Evansville Regional Campus Dean and Director**

#### **Steven G. Becker, MD**

### Mentors & Instructors

Barbara Cash, MHA, CSSMBB, Quality Systems Manager, Deaconess Health System, Adjunct Instructor, IU School of Medicine-Evansville

Greg Folz, CCRP, Consultant, Research Institute of Deaconess Clinic, Adjunct Instructor

Tapan Mehta, MD, Physician, St. Vincent Ascension Evansville

Amanda Boehleber, MD, Physician, Deaconess Health System

Majed Koleilat, MD, Clinical Director, Deaconess Research Institute

William Smith, MD, Physician, Deaconess Health System

Susan Ely, PhD, Assistant Professor of Engineering, University of Southern Indiana

Jeffrey Starkey, PharmD, Pharmacist, Deaconess Health System

Gabriel Gruionu, PhD, Assistant Research Professor of Medicine

Subha Raman, MD, Professor of Medicine

Jing Su, PhD, Assistant Professor of Biostatistics and Health Data Sciences

### Student Participants

#### **Class of 2024**

Clark Berry - Evansville

Joseph Davis - Evansville

Ashton Mitchell - Evansville

David Pereira - Evansville

Ileana Rodriguez - Evansville

Troy Wesson - Evansville

#### **Class of 2023**

Christopher Blanco - Evansville

Jara Crawford - Evansville

Shannon Gidley - Evansville

Shania James - Evansville

Brian Moreno - Fort Wayne

Abigail Parker - Indianapolis

Carly Waggoner - Evansville



## Rural Health – Terre Haute (launched 2019)

This concentration offers students an opportunity to learn and engage with rural communities through public health research. Coursework and projects teach students how community and behavior unique to rural populations impact public health issues.

### Coursework

Introduction to Public Health  
Introduction to Rural and Agricultural Health  
Rural Health Journal Club  
Fundamentals of Research and Scholarship

### Co-Directors

#### **Ellen M. Ireland, PhD**

Clinical Assistant Professor

#### **Robin L. Danek, MPH**

Senior Lecturer

#### **Terre Haute Regional Campus Dean and Director**

#### **Taihung (Peter) Duong, PhD**

### Staff, Mentors & Instructors

Eric Reyes, PhD, Associate Professor,  
Rose-Hulman Institute of Technology

Jiali Han, PhD, Professor, Chair of Epidemiology,  
Richard M. Fairbanks School of Public Health

### Student Participants

#### **Class of 2024**

Morgan Danielle Black - Terre Haute  
Zoe Mae Burrow - Terre Haute  
Mason Roarke Tollar - Terre Haute

#### **Class of 2023**

Sarah Elizabeth Hopfer - Terre Haute  
Olivia Renae Neese - Terre Haute  
Rachel Jane Nettleton - Terre Haute  
Joseph Michael Riggs - Terre Haute

The Rural Medicine education program and the Scholarly Concentration have strengthened my desire to serve those in my small community and have afforded me the skills to be able to do so with confidence and greater knowledge of the needs around me. It is preparing me to come home and care for those who took such good care of me.

EMMA ECKROTE, CLASS OF 2022, SCHOLARLY CONCENTRATION IN RURAL HEALTH, TERRE HAUTE





## Urban Medicine and Health Care Disparities – Northwest/Gary (launched 2019)

This concentration provides students with an understanding of the historical and contemporary barriers that exist for the nation's medically underserved in urban areas. Students will investigate authentic cross-cultural and linguistic issues in health care and be able to demonstrate how sensitivity to such issues improves health care for all. Through scholarly project work, students will act as advocates by developing interventions to address or reduce health disparities.

### Coursework

Introduction to Public Health  
Healthcare Disparities in an Urban Setting  
Fundamentals of Research and Scholarship

### Co-Directors

#### **Amy W. Han, PhD**

Academic Specialist, Director, Clinical Education

#### **Elizabeth Ryan, EdD**

Associate Dean and Director, IU School of Medicine-Northwest/Gary

#### **Baraka Muvuka, PhD, MPH, MCHES**

Assistant Professor of Clinical Family Medicine, Director of Research

### Student Participants

#### **Class of 2024**

Mohamed Shakeeb Aldallal - Northwest  
Yazan Al-Tarshan - Northwest  
Daniel Luke Green - Northwest  
Alanna Hooper - Northwest  
Sean William O'Brien - Northwest  
Maryam Meraj Sabir - Northwest

#### **Class of 2023**

Alexander James Huang - Northwest  
Deeb Omari - Northwest  
Cameron McLeod Snapp - Northwest  
Clayton Yang Tsang - Northwest

### Staff, Mentors & Instructors

Roland Walker, MD, Commissioner, Gary Health Department; Assistant Professor of Pediatrics

Michael McGee, MD, Assistant Professor of Emergency Medicine

Kobie Douglas, MD, Assistant Professor of Psychiatry, Program Director, IU School of Medicine-Northwest/Gary Psychiatry Residency, Medical Director, Regional Health Systems

Andrea DeLeo, MSE, DO, Assistant Professor of Neurology

Larry Salberg, MD, Professor of Neurology; Neurology Site Leader, IUSM-Northwest/Gary

Anthony Gentile, MD, Assistant Professor of Obstetrics and Gynecology

Ramana Yedavalli, MD, Assistant Professor of Interventional Radiology

William Forgey, MD, Assistant Professor of Family Medicine

Samer Abbas, MD, Assistant Professor of Cardiology

Amir Hajrasouliha, MD, Glick Eye Institute

Tatiana Kostrimanova, PhD, Professor of Histology

Sulman Hussain, DO, Assistant Professor of Cardiology

Samer Ajam, MD, Assistant Professor of Cardiology

Jonathan Guerrero, PharmD, BCPS, Assistant Professor of Clinical Pharmacology and Toxicology

Swapna Dave, MPH, MBBS, Research Project Manager, Northwestern University

Victor Garcia, Foodbank of Northwest Indiana

Reuben Rutland, MD, Assistant Professor of Surgery

Jason Zaideman, Operation Combat Bike Saver

Silvia Bigatti, PhD, Professor, Richard M. Fairbanks School of Public Health



## Business of Medicine (launched 2019)

A partnership with IU's Kelley School of Business, this concentration prepares future physicians to apply the fundamentals of business in clinical environments. Merging evidence-based management with evidence-based medicine, students learn how to improve medical outcomes, reduce costs and lift staff morale.

### Coursework

Value Creation and Financial Performance in Health Care Systems  
 Business Management of the Patient Experience  
 Fundamentals of Research and Scholarship

### Co-Directors

#### **Charles N. Rudick, PhD**

Assistant Director of Medical Education, IU School of Medicine-Bloomington

#### **Kyle J. Anderson, PhD**

Clinical Assistant Professor, Kelley School of Business

### Staff, Mentors & Instructors

Philip Powell, PhD, Associate Dean, IU Kelley School of Business

M. Kim Saxton, MBA, PhD, Clinical Professor of Marketing, IU Kelley School of Business

Todd Saxton, PhD, Associate Professor of Strategy and Entrepreneurship and Kelley Venture Fellow, IU Kelley School of Business

### Student Participants

#### Class of 2024

Nathaniel Banet - Indianapolis  
 Albert Brougham - Northwest  
 Kyle Burton - Terre Haute  
 Moriah Carmel - Northwest  
 Alexander Daugherty - Indianapolis  
 Frank Dijak - Indianapolis  
 Matthias Ebeyer - Bloomington  
 Jackson Griffith-Linsley - Indianapolis  
 Sai Kodukula - Northwest  
 Niloy Lahiri - Indianapolis  
 Paul Muldoon - Indianapolis  
 Austin Natalie - Bloomington  
 Laeticia Nkuibet - Northwest  
 Bhumi Patel - Bloomington  
 Charles Price - Indianapolis  
 Juan Sanchez Castro - Indianapolis  
 Ruhani Sansoya - Bloomington  
 Joshua Thomson - Indianapolis  
 Amna Yaqub - Indianapolis

#### Class of 2023

Haider Al-Awadi - Indianapolis  
 Matthew Anderson - Indianapolis  
 Christopher Arnold - Bloomington  
 Aatif Basher - Indianapolis  
 Conor Cunningham - Indianapolis  
 Connor Drake - Bloomington  
 Colton Houchin - Indianapolis  
 Bryan Ko - Bloomington  
 Joseph Lenkey - Indianapolis  
 Peter Leonard - Indianapolis  
 Mathew Padanilam - Bloomington  
 Purva Patel - West Lafayette  
 John Petroskey - Indianapolis  
 Emily Ritsema - Indianapolis  
 Summer Samuels - Muncie  
 Ishani Sharma - Indianapolis  
 Lovekirat Singh - Fort Wayne  
 Dylan Stolz - Indianapolis  
 Christopher Tarnowski - Muncie  
 Acacia Williams - Indianapolis

## Medical Humanities (launched 2020)

A collaboration with the Medical Humanities and Health Studies Program in the School of Liberal Arts at IUPUI, this concentration offers an interdisciplinary course of study that provides medical students with qualitative humanistic and socio-cultural perspectives on health care. Students will study more comprehensively, and in-depth, the social, cultural, and humanistic determinants and consequences of health, disease and healing from literary, historical and bioethical perspectives.

### Coursework

Introduction to Medical Humanities: Perspectives on Health, Disease and Healing

Medicine and the Humanities: Examining the Human Condition

Fundamentals of Research and Scholarship

### Co-Directors

#### **Emily S. Beckman, DMH**

Adjunct Assistant Professor of Medicine

#### **Jane A. Hartsock, JD, MA**

Visiting Assistant Professor, School of Liberal Arts

### Student Participants

#### **Class of 2024**

Lynn Alsatie - Muncie  
Jordan Finch - Muncie  
Sara Hardman - Indianapolis  
Matthew Hodges - Indianapolis  
Nisreen Islaih - West Lafayette  
Jenna Jones - Terra Haute  
Samira Kouchakzadeh - Evansville  
Nicholas O'Connor - Indianapolis  
Jesus Olivera - Evansville  
Gabrielle Omoregie - West Lafayette  
Taruni Pandhiri - Muncie  
Samantha Rodriguez - South Bend

Kathryn Sokolowski - Indianapolis  
Aish Thamba - Bloomington

#### **Class of 2023**

Autumn Austin - Evansville  
Erin Becker - Indianapolis  
Hannah Dempsey - Indianapolis  
Mary Etling - Indianapolis  
Walter Fitschen - Indianapolis  
Joshua Hoffer - Indianapolis  
Evan Munn - Indianapolis  
Ferris Nimri - Northwest  
Anna Purk - Fort Wayne

### Staff, Mentors & Instructors

Elizabeth Nelson, PhD, Assistant Professor, Medical Humanities and Health Studies, IU School of Liberal Arts, IUPUI

Paul Helft, MD, Professor of Medicine, and Director, Charles Warren Fairbanks Center for Medical Ethics

Peter Schwartz, MD, PhD, Director, IU Center for Bioethics; Associate Professor of Medicine

Richard Gunderman, MD, PhD, Chancellor's Professor of Radiology, Pediatrics, Medical Education, Philosophy, Liberal Arts, Philanthropy, and Medical Humanities and Health Studies at Indiana University and John A Campbell Professor of Radiology

Kenzie Mintus, PhD, Associate Professor, Sociology, IU School of Liberal Arts, IUPUI

Diane Prenatt, PhD, Professor of Literature, Marian University

Brandon Brown, MD, MA, Vice-Chair, Radiology and Imaging Sciences and Associate Professor of Radiology, Pediatrics, Obstetrics and Gynecology, Philosophy, Medicine

Colin Halverson, PhD, Assistant Professor of Medicine

Angeline Larimer, MFA, MA, Affiliate Faculty, Medical Humanities and Health Studies, Communication Studies, IU School of Liberal Arts, IUPUI

Katharine Head, PhD, Associate Professor of Communication Studies, IU School of Liberal Arts, IUPUI



## Public Health (launched 2019)

A partnership with the Richard M. Fairbanks School of Public Health at IUPUI, this concentration provides foundational knowledge in public health including an understanding of the U.S. health system; trends impacting public health; and evidence-based interventions, among other topics.

### Coursework

Introduction to Public Health  
 Population Health for Clinicians  
 Fundamentals of Research and Scholarship

### Co-Directors

**Paul K. Halverson, DrPH, FACHE**

Dean, Richard M. Fairbanks School of Public Health, Adjunct Professor of Family Medicine

**Maureen A. Harrington, PhD**

Associate Dean for Medical Student Education, Foundational Sciences, IU School of Medicine

**William Tierney, MD**

Associate Dean for Population Health and Health Outcomes, Richard M. Fairbanks School of Public Health

**Jordan Holmes, MD**

Assistant Professor of Radiation Oncology

### Student Participants

**Class of 2024**

Doriann Alcaide - Indianapolis  
 Cassandra Anderson - Fort Wayne  
 Joseph Ballard - Indianapolis  
 Courtney Casbon - South Bend  
 Zane Duke - Indianapolis  
 April Gettelfinger - Terre Haute  
 Shukurat Giwa - Fort Wayne  
 Madeline Hathoot - South Bend  
 Ayesha Khan - Fort Wayne  
 Nida Khan - Indianapolis  
 Carsyn Kranz - Fort Wayne  
 Taylor Luster - Indianapolis  
 Abhipri Mishra - Fort Wayne  
 Victor Olafusi - Indianapolis  
 Sophia Pardo - Indianapolis

Neal Patel - Indianapolis  
 Victoria Rone - Evansville  
 Courtney Seigel - Indianapolis  
 Lucas Turner - Evansville  
 Kaitlin Wendel - Indianapolis  
 Collin Wilkins - Indianapolis

**Class of 2023**

Kazeerat Adedokun - Fort Wayne  
 Nudar Bhuiya - Fort Wayne  
 Miranda Bouwer - Bloomington  
 James Brent - Terre Haute  
 Madison Dolan - Fort Wayne  
 Madeline Evans - Indianapolis  
 Yi Yan Heng - Indianapolis  
 Sarah Komanapalli - Indianapolis  
 Scott Liu - Indianapolis

Seth Losiewicz - Northwest  
 Amira Nafiseh - Indianapolis  
 Brian Niebuhr - West Lafayette  
 Francis Nwaneri - Fort Wayne  
 Shraya Patel - Indianapolis  
 Christina Salgado - Indianapolis  
 Melanie Scheive - Indianapolis  
 Jake Whiteside - West Lafayette  
 Allison Young - Indianapolis

**Class of 2026 (leave of absence, graduate study)**

Luke Brennan - Indianapolis  
 Alexa Petrucciani - Indianapolis

### Staff, Mentors & Instructors

Jeffrey Peipert, MD, PhD, Chair, Department of Obstetrics and Gynecology

Javier Sevilla- Martir, MD, Assistant Dean for Diversity Affairs and Professor of Clinical Family Medicine

Mary Ciccarelli, MD, Morris Green Professor of Pediatrics

Sherri Bucher, PhD, Associate Professor of Pediatrics, Investigator, Global Network for Women's and Children's Research, USAID-AMPATH

Sarah Wiehe, MD, PhD, Associate Dean for Community and Translational Research

David Haggstrom, MD, Associate Professor of Medicine, Core Investigator, Veterans Affairs Health Services Research and Development Center for Health Information and Communication and Regenstrief Institute Research Scientist

Max Moreno, PhD, MEM, Associate Professor, Richard M. Fairbanks School of Public Health

Sarah Stelzner, MD, Assistant Professor of Clinical Pediatrics

Jacqueline Linnes, PhD, Assistant Professor of Biomedical Engineering, Weldon School of Biomedical Engineering, Purdue University

Fabian Esamai, MD, PhD, Department of Child Health and Pediatrics, Moi University

Osayame Ekhaguere, MD, Assistant Professor of Clinical Pediatrics

Christopher Callahan, MD, Professor of Medicine, Investigator, Center for Aging Research, Regenstrief Institute, Inc., Director, Sandra Eskenazi Center for Brain Care Innovation

Megan McHenry, MD, Assistant Professor of Pediatrics

Caitlin Bernard, MD, Assistant Professor Clinical Obstetrics and Gynecology



Heidi Beidinger-Bernet, PhD, Assistant Professor, Eck Institute of Global Health at University of Notre Dame, Campus Liaison for the Indiana Clinical and Translational Sciences Institute

Sonak Pastakia, PharmD, Adjunct Professor of Medicine

Ruben Hernandez, MD, Assistant Professor of Clinical Family Medicine

Chi Wah "Rudy" Yung, MD, Professor Emeritus of Ophthalmology

Sylk Sotto, EDD, MBA, MPS, Vice Chair for Faculty Affairs, Development and Diversity and Assistant Professor of Medicine

Emily Cha, MD, Assistant Professor of Clinical Orthopaedic Surgery

Brian Gray, MD, Assistant Professor of Surgery

Olena Mazurenko, MD, PhD, Associate Professor, Richard M. Fairbanks School of Public Health

Bob Einterz, MD, Emeritus Professor, Founding Director, IU Center for Global Health, Donald E. Brown Professor of Global Health, Associate Dean for Global Health, St. Joseph County Health Dept.

Sally Dixon, Fetal Infant Mortality Review Program Coordinator, HOPE, St. Joseph County Health Dept.

Kurt Kroenke, MD, MACP, Chancellor's Professor, IUPUI, Professor of Medicine and Regenstrief Institute Research Scientist

Tammy Toscos, PhD, Adjunct Assistant Professor, Health Informatics

Adam Eckerd, PhD, Associate Professor, O'Neill School of Public and Environmental Affairs

Jill Connors, PhD, Assistant Research Professor of Surgery

Kathryn Haider, MD, Associate Professor of Clinical Ophthalmology and Director of Clinical Research

Tami Hannon, MD, Professor of Pediatrics and Professor of Medical and Molecular Genetics

Jim Lemons, MD, Professor of Clinical Pediatrics

Leslie Enane, MD, Assistant Professor of Pediatrics

Shellye Suttles, PhD, Assistant Professor, O'Neill School of Public and Environmental Affairs

Matt Turissini, MD, Assistant Professor of Clinical Medicine

Kara García, PhD, Assistant Research Professor of Radiology and Imaging Sciences and Navigator for the Indiana Clinical and Translational Sciences Institute

Linda Williams, MD, Professor of Neurology

## Religion and Spirituality in Medicine (launched 2021)

In this concentration, students are introduced to major spiritual traditions and how they interact with spiritual concepts in health. A diversity of religious traditions, as well as non-religious spiritual traditions are covered. Course sessions will be led by a spiritually diverse faculty, with discussion of spiritual traditions preferentially led by leaders within those traditions.

### Coursework

Survey of Spiritual Traditions and Concepts in Health

Survey of Spiritual Care Practice and the Research of Spirit

Religion and Spirituality in Medicine Journal Club

Fundamentals of Research and Scholarship

### Co-Directors

#### **Alex Lion, DO**

Assistant Professor of Clinical Pediatrics

#### **Mona A. Raed, MD**

Assistant Professor of Clinical Pediatrics

### Staff, Mentors & Instructors

Ann Cottingham, MA, Director, Research in Health Professions Practice and Education, Center for Health Services Research, Regenstrief Institute

Robert Saler, PhD, Research Professor in Religion and Culture, Christian Theological Seminary

Faculty from Evans Center

### Student Participants

#### **Class of 2024**

Nirupama Devanathan - Indianapolis

Evin George - Bloomington

Anthony Williams - Evansville

Inez Yu - Evansville

# Scholarly Concentrations Program Scholarship

The IU School of Medicine Scholarly Concentrations Program encourages student scholarly work and is also a vehicle for scholarship. Here are scholarly accomplishments since the program began in 2019.



## Promoting Regional Campus Excellence: The Scholarly Concentrations Program at Indiana University School of Medicine

**Read the publication here.**

Authors Paul M. Wallach, MD; Deborah R. Birnbaum, MBA; Bradley L. Allen, MD, PhD; Daniel R. Corson-Knowles, MD; Elizabeth R. Ryan, EdD; Jay L. Hess, MD, PhD, MHSA



Selected to present **Recruiting to Regional Campuses: Using Scholarly Concentrations Model Across Eight Campuses at Indiana University School of Medicine** in April 2020.

Authors Deborah R. Birnbaum, MBA; Elizabeth Ryan, EdD; Paul M. Wallach, MD (cancelled due to COVID-19)

## Presented at CHANGE MEDED 2019:

**Scholarly Concentrations: A Novel Platform for Delivery of Health Systems Science Exposure and Highlight Unique Learning Environments Across the Nine Campuses of Indiana University School of Medicine.** Authors Bradley L. Allen, MD PhD; Maureen A. Harrington, PhD; Jean Mensz, MD; Daniel Corson-Knowles, MD; Deborah R. Birnbaum, MBA; Paul M Wallach, MD

## 2nd Annual IU School of Medicine Education Day: Adaptability in Medical Education

**Presentation: Recruiting to Regional Campuses: Using Scholarly Concentrations Model Across Eight Campuses at Indiana University School of Medicine.** Authors Elizabeth Ryan, EdD; Deborah R. Birnbaum, MBA; Lauren Henninger, MA; Courtney Lewellen, MS

**Workshop: Educational Programs and Adaptability: A Systems Approach to Creating Adaptable Educational Programs.** Authors Deborah R. Birnbaum, MBA; Daniel Corson-Knowles, MD; Michelle Rojas, MS; Kathy Lee

**See the presentation here.**

## 1st Annual IU School of Medicine Education Day: Bringing Fresh Perspectives to Medical Education

**Scholarly Concentrations: A Novel Platform for Delivery of Health Systems Science Exposure and Highlight Unique Learning Environments Across the Nine Campuses of Indiana University School of Medicine.** Authors Bradley L. Allen, MD, PhD; Deborah R. Birnbaum, MBA; Daniel R. Corson-Knowles, MD; Maureen A. Harrington, PhD; MD; Paul M. Wallach, MD.

**See the presentation here.**

**The IUSM Scholarly Concentrations Program: Strategic Collaborative Education Across Schools and Departments.** Authors Deborah R. Birnbaum, MBA; Daniel R. Corson-Knowles, MD; Michelle Rojas, MS; Paul M. Wallach, MD

**See the presentation here.**

**Regional Medical Campuses: Leveraging Our Structure.** Authors Deborah R. Birnbaum, MBA; Emily Walvoord, MD; Elizabeth R. Ryan EdD

# Leadership

## Scholarly Concentrations Program Team

Program Manager: Deb Birnbaum, MBA

Program Coordinator: Michelle Rojas, MS

Faculty Lead: Daniel Corson-Knowles, MD

Executive Associate Dean for Educational Affairs and Chief Academic Officer: Paul Wallach, MD

### Scholarly Concentrations Program Ad-Hoc Committee

This committee is charged with reviewing scholarly concentration proposals and bringing recommendations to the Curriculum Council Steering Committee

Bradley L. Allen, PhD, MD, Senior Associate Dean for Medical Education

Fen-Lei Chang, Associate Dean and Director, IU School of Medicine-Fort Wayne

Taihung (Peter) Duong, Associate Dean and Director, IU School of Medicine-Terre Haute

Maureen A. Harrington, PhD, Associate Dean for Medical Student Education, Foundational Sciences, IU School of Medicine

Laura Hinkle, MD, Assistant Professor of Clinical Medicine

Charles N. Rudick, PhD, Assistant Director of Medical Education, IU School of Medicine-Bloomington

Paige Schultheis, MD, Obstetrics and Gynecology Resident, IU School of Medicine

### Scholarly Concentrations Program Operations Team

Alison Banta, Educational Technology Specialist

Deb Birnbaum, MBA, Scholarly Concentrations Program Manager

Daniel Corson-Knowles, MD, Scholarly Concentrations Faculty Lead

David Hanson, Data Analyst

Scott Hemmerlein, Manager of Application Integration, Web and Business Intelligence

Anthony Masseria, MEd, Evaluation Program Manager

Michelle Rojas, MS, Scholarly Concentrations Program Coordinator

Lorie Shuck, MS, Director of Education Technology

Doug Walters, Senior Analyst/Programmer

Sarah Walsh, MPH, Assessment and Evaluation Specialist

Amanda Ybarra, MA, Registrar

### Scholarly Concentrations Evaluation and Assessment Program Team

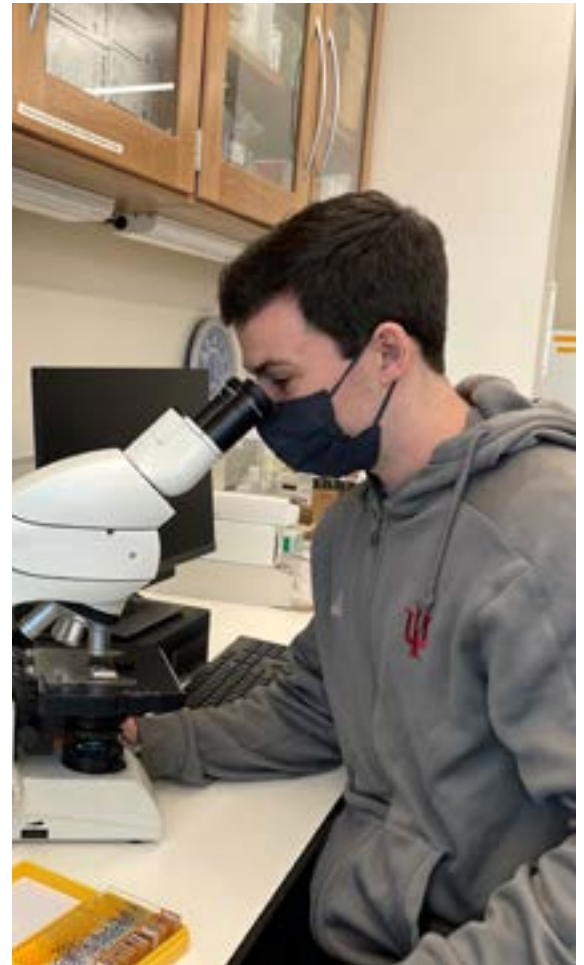
Deb Birnbaum, MBA, Scholarly Concentrations Program Manager

Anthony Masseria, MEd, Evaluation Program Manager

Michelle Rojas, MS, Scholarly Concentrations Program Coordinator

Sarah Walsh, MPH, Assessment and Evaluation Specialist

Bradley L. Allen, PhD, MD, Senior Associate Dean for Medical Education



**My concentration in Health Integration and Healthy Aging was diverse enough to truly apply to any field I would wish to pursue. This program has taught me how much of health care occurs out of the office or operating room, and I will carry this knowledge and skillset with me as I advance throughout my career.**

**SAM STEGELMANN, CLASS OF 2022, SCHOLARLY CONCENTRATION IN HEALTH INTEGRATION AND HEALTHY AGING, FORT WAYNE**







# SCHOOL OF MEDICINE

Dean Jay L. Hess, MHSA, PhD, MD

## Scholarly Concentrations Program

[Visit website](#)

## INDIANA UNIVERSITY SCHOOL OF MEDICINE

[Visit website](#)