



RESEARCH



TOTAL GRANTS AWARDED - FOR IU FISCAL YEAR ENDING JUNE 30, 2021 **\$446,859,917**

NIH FUNDING - FOR FEDERAL FISCAL YEAR ENDING SEPTEMBER 30, 2021 **\$217,970,191**

NIH RANKING - FOR FEDERAL FISCAL YEAR ENDING SEPTEMBER 30, 2021 **27**

EDUCATION

CLASS OF 2025



5,988
APPLICATIONS
RECEIVED



366
STUDENTS
ENROLLED



177/189
MALE VS
FEMALE

73

UNDERREPRESENTED
MINORITIES



316
IN STATE



3.82
AVERAGE GPA

50
OUT OF STATE



512
AVERAGE MCAT

MEDICAL STUDENT BODY

BLOOMINGTON 89

EVANSVILLE 85

FORT WAYNE 84

INDIANAPOLIS 843

MUNCIE 56

NORTHWEST GARY 67

SOUTH BEND 74

TERRE HAUTE 81

WEST LAFAYETTE 57

TOTAL 1,436



MD ANNUAL TUITION

IN STATE **\$36,576**

OUT OF STATE **\$62,033**

GRADUATE MEDICAL EDUCATION

TOTAL RESIDENTS + FELLOWS **1,340**

TOTAL ACCREDITED PROGRAMS **102**

OTHER PROGRAMS **82**

GRADUATE + UNDERGRADUATE PROGRAMS

MASTER'S STUDENTS **170**

PHD STUDENTS **200**

HEALTH PROFESSIONS PROGRAM **271**

FACULTY AND STAFF

FACULTY

VOLUNTEER **3,783**

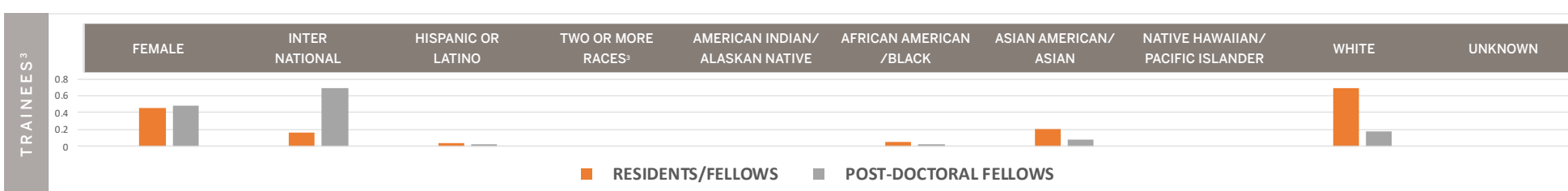
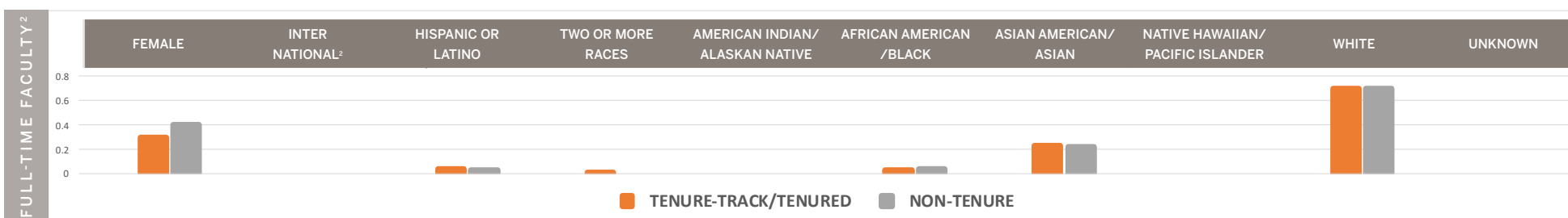
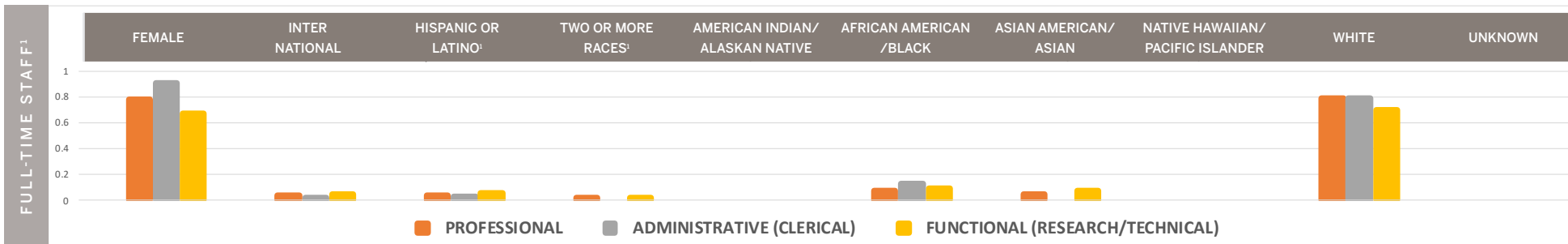
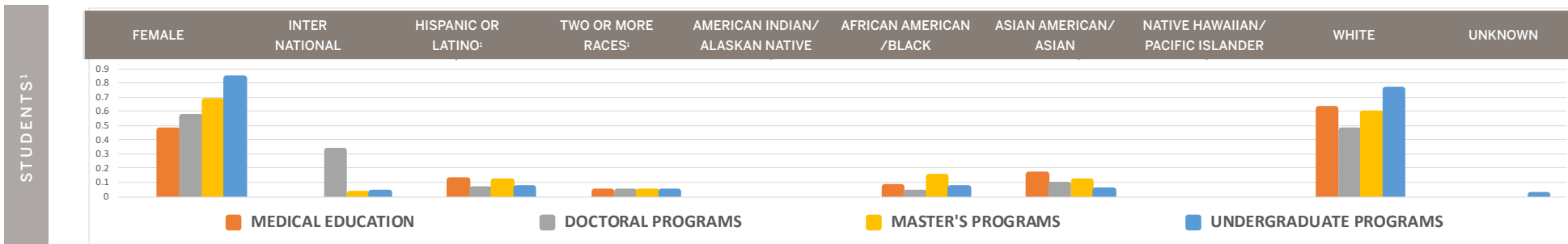
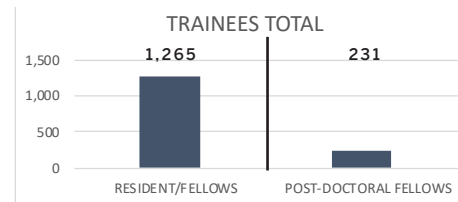
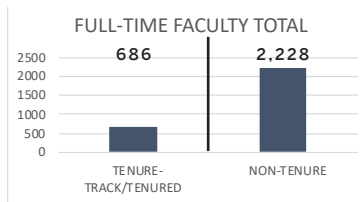
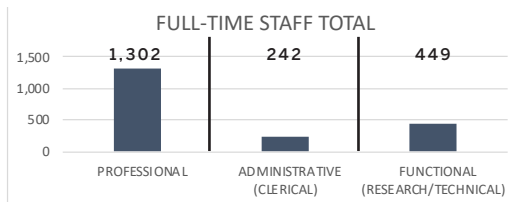
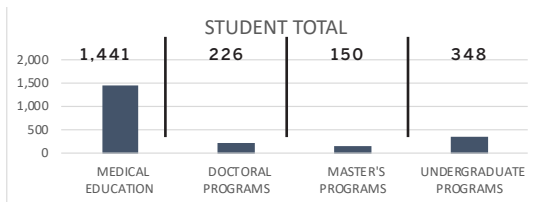
PART TIME **318**

FULL TIME **3,095**

STAFF

TOTAL **2,057**

IU SCHOOL OF MEDICINE DIVERSITY FACT SHEET ACADEMIC YEAR 2020-2021



¹IU STUDENT AND STAFF DATA FOLLOWS FEDERAL REPORTING GUIDES CATEGORIZING INDIVIDUALS WHO SELECTED MORE THAN ONE RACE OR ETHNICITY INTO INTERNATIONAL, HISPANIC OR LATINO, OR TWO OR MORE RACES. [SEE IJRR DATA GUIDE FOR MORE INFORMATION](#) ABOUT LOGIC APPLIED. THE ORDER OF RACE OR ETHNICITY CATEGORIES, FIRST, FOLLOWS LOGIC APPLIED, AND THEN, ALPHABETICALLY LISTS SINGLE-SELECTED CATEGORIES.

²IU SCHOOL OF MEDICINE FACULTY DATA SYSTEM DOES NOT REPORT INTERNATIONAL STATUS AS A RACE OR ETHNICITY CATEGORY.

³IU SCHOOL OF MEDICINE RESIDENCY DATA SYSTEM DOES NOT REPORT 'TWO OR MORE RACES' AS A CATEGORY.





IU SCHOOL OF MEDICINE DIVERSITY FACT SHEET ACADEMIC YEAR 2020-2021

	TOTAL	FEMALE	INTER NATIONAL	HISPANIC OR LATINO	TWO OR MORE RACES	AMERICAN INDIAN/ALASKAN NATIVE	AFRICAN AMERICAN / BLACK	ASIAN AMERICAN/ ASIAN	NATIVE HAWAIIAN/ PACIFIC ISLANDER	WHITE	UNKNOWN
STUDENTS¹											
MEDICAL EDUCATION	1,441	47.0%	<1.0%	11.5%	3.9%	0.0%	6.5%	15.5%	0.0%	62.2%	<1.0%
GRADUATE: DOCTORAL PROGRAMS	226	56.2%	32.3%	5.3%	4.0%	0.0%	3.1%	8.4%	0.0%	46.9%	<1.0%
GRADUATE: MASTER'S PROGRAMS	150	67.3%	2.0%	10.7%	3.3%	0.0%	14.0%	10.7%	0.0%	58.7%	<1.0%
UNDERGRADUATE PROGRAMS	348	83.6%	3.2%	6.0%	3.4%	0.0%	6.3%	4.6%	0.0%	75.6%	1.1%
FULL-TIME STAFF¹											
PROFESSIONAL	1,302	77.9%	3.5%	3.5%	1.8%	<1.0%	7.2%	4.8%	<1.0%	78.8%	<1.0%
ADMINISTRATIVE (CLERICAL)	242	90.5%	2.5%	2.9%	<1.0%	<1.0%	12.8%	<1.0%	0.0%	79.3%	<1.0%
FUNCTIONAL (RESEARCH/TECHNICAL)	449	67.2%	5.1%	5.3%	2.4%	<1.0%	9.1%	7.8%	0.0%	69.5%	<1.0%
FULL-TIME FACULTY²											
TENURE-TRACK/TENURED	686	30.0%	--	3.6%	1.3%	0.0%	2.6%	22.9%	0.0%	70.1%	<1.0%
NON-TENURE	2,228	40.2%	--	3.1%	<1.0%	<1.0%	4.2%	21.7%	<1.0%	69.7%	<1.0%
TRAINEES³											
RESIDENTS/FELLOWS	1,265	45.4%	15.9%	4.5%	--	<1.0%	5.4%	20.0%	0.0%	69.5%	0.0%
POST-DOCTORAL FELLOWS	231	48.9%	68.4%	2.2%	<1.0%	0.0%	2.2%	8.2%	<1.0%	18.2%	0.0%
STATE OF INDIANA⁴											
POPULATION ESTIMATES, 2019	6,731,219	50.7%	--	7.3%	2.2%	0.4%	9.9%	2.6%	0.1%	84.8%	--

¹IU STUDENT AND STAFF DATA FOLLOWS FEDERAL REPORTING GUIDES CATEGORIZING INDIVIDUALS WHO SELECTED MORE THAN ONE RACE OR ETHNICITY INTO INTERNATIONAL, HISPANIC OR LATINX, OR TWO OR MORE RACES. [SEE UIRR DATA GUIDE FOR MORE INFORMATION](#) ABOUT LOGIC APPLIED. THE ORDER OF RACE OR ETHNICITY CATEGORIES, FIRST, FOLLOWS LOGIC APPLIED, AND THEN, ALPHABETICALLY LISTS SINGLE-SELECTED CATEGORIES.

²IU SCHOOL OF MEDICINE FACULTY DATA SYSTEM DOES NOT REPORT INTERNATIONAL STATUS AS A RACE OR ETHNICITY CATEGORY.

³IU SCHOOL OF MEDICINE RESIDENCY DATA SYSTEM DOES NOT REPORT 'TWO OR MORE RACES' AS A CATEGORY.

⁴SOURCE: U.S. CENSUS BUREAU